

CRAFTMADE™

Z42-MS-BZ/Z42-MS-MN/Z42-MS-W

PLEASE READ AND SAVE FOR FUTURE REFERENCE.

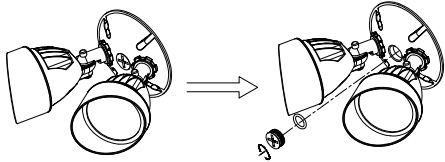
CAUTION

1. turn off the main power at the circuit breaker before installing the motion sensor in order to prevent possible shock.
- 2 All electrical connections must be in accordance with local and National Electrical Code (N.E.C.) standards. If you are unfamiliar with proper electrical wiring connections, obtain the services of a qualified electrician.

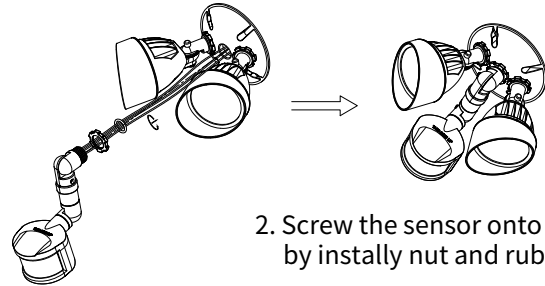
GENERAL

Remove all parts and hardware from the box and make sure that none are missing by referencing the illustrations provided.

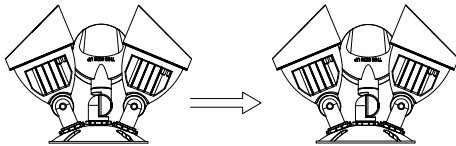
BLOCK DIAGRAM (WIRING)



1. Remove the knockout plug.



2. Screw the sensor onto the fixture by install nut and rubber washer.



3. Pre-install gear nut onto the stem of the fixture head, and add the rubber washer, screw in the fixture then fixing it to the canopy.

4. Using wire nuts provided, connect the black fixture wire to the blue sensor wire. Connect the white fixture wire to the white sensor wire. If you found the white wire is too short. Please spare white wire for both sesor and fixture.

