

LED DISC LIGHT

Dimmable

LED-4L



TOOLS AND MATERIALS REQUIRED:



Phillips Screwdriver



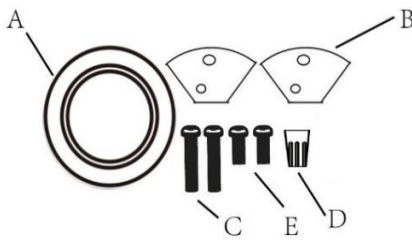
Wire Cutters

Wiring supplies as required by your local Provincial or State Electrical Code

SAFETY PRECAUTIONS:

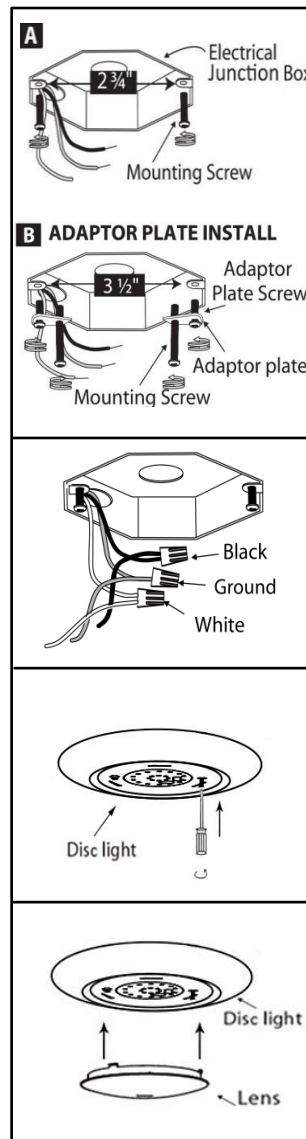
1. TURN OFF ELECTRICAL POWER BEFORE STARTING INSTALLATION OF LIGHT FIXTURE.
2. THIS PRODUCT MUST BE INSTALLED IN ACCORDANCE WITH THE APPLICABLE INSTALLATION CODE BY A CERTIFIED ELECTRICIAN FAMILIAR WITH LOCAL MUNICIPAL CODES AND REQUIREMENTS.
3. CONSULT A QUALIFIED ELECTRICIAN TO ENSURE CORRECT BRANCH CIRCUIT CONDUCTOR.

PART	DESCRIPTION	QTY
A	LED disc light	1
B	Adaptor plate	2
C	Mounting screws	2
D	Wire nut	3
E	Adaptor plate screw	2



FLUSH MOUNT

This LED light is compatible to be dimmed by LUTRON #MACL-153MH, TGCL-153P, DV-600P, LEVITON# 6631, 6633, 6633-P, 6672, 6674, IPL06. Dimming levels may vary by different dimmer .



1. Prior to installation, you will need to determine if the electrical junction box requires the adaptor plate or not. If the distance between the mounting screws in your electrical junction box is greater than 2 3/4", you will need to use the adaptor plate. Securely tighten adaptor plate, with adaptor plate screws. Do not drive mounting screws completely to the end of the junction box.
2. Connect supply wires to wires on fixture with wire nuts. Connect white to white, black to black, and copper wire to copper wire as grounding connection.
3. With the lens off the fixture, attach disc light to mounting screws, turn fixture clockwise to lock. Tighten screws to firmly hold the fixture in place.
4. Complete the installation by twisting the lens on the disc light.

Made in China